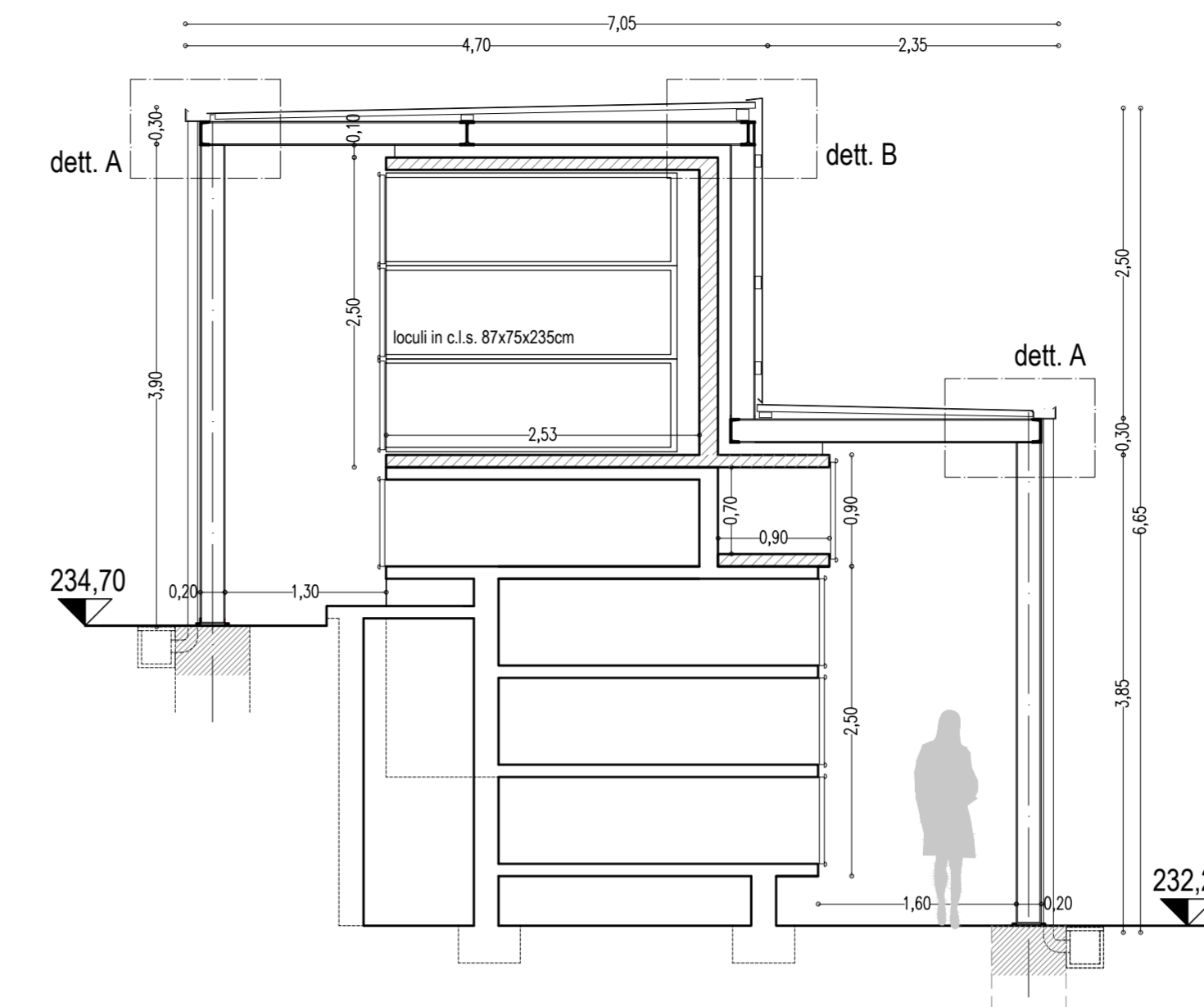
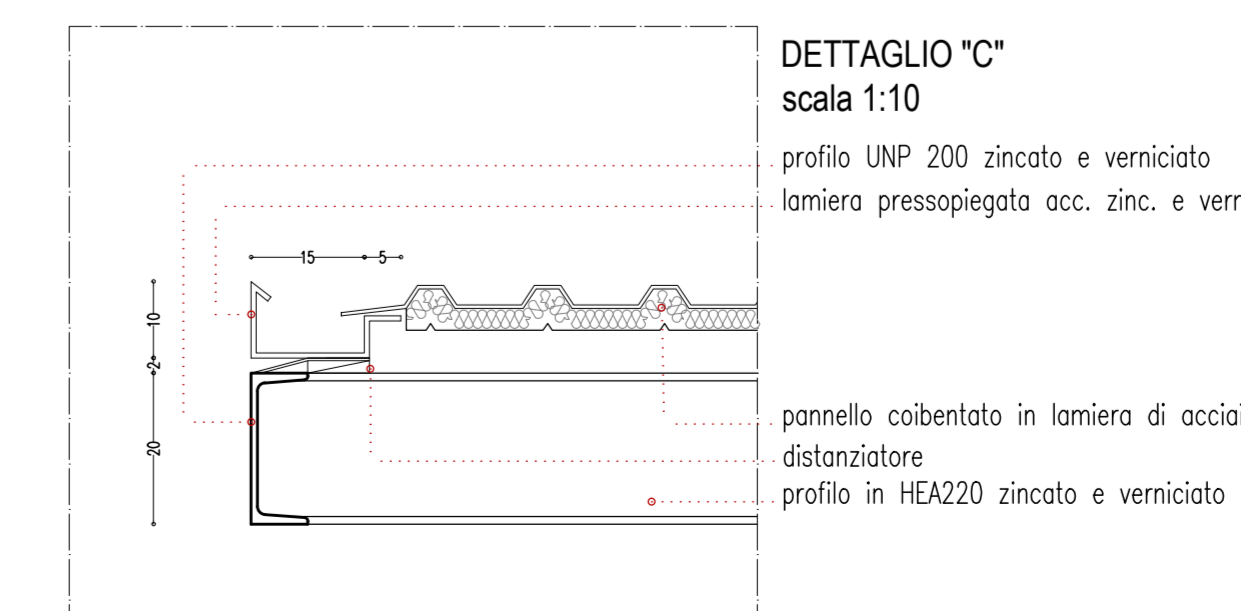
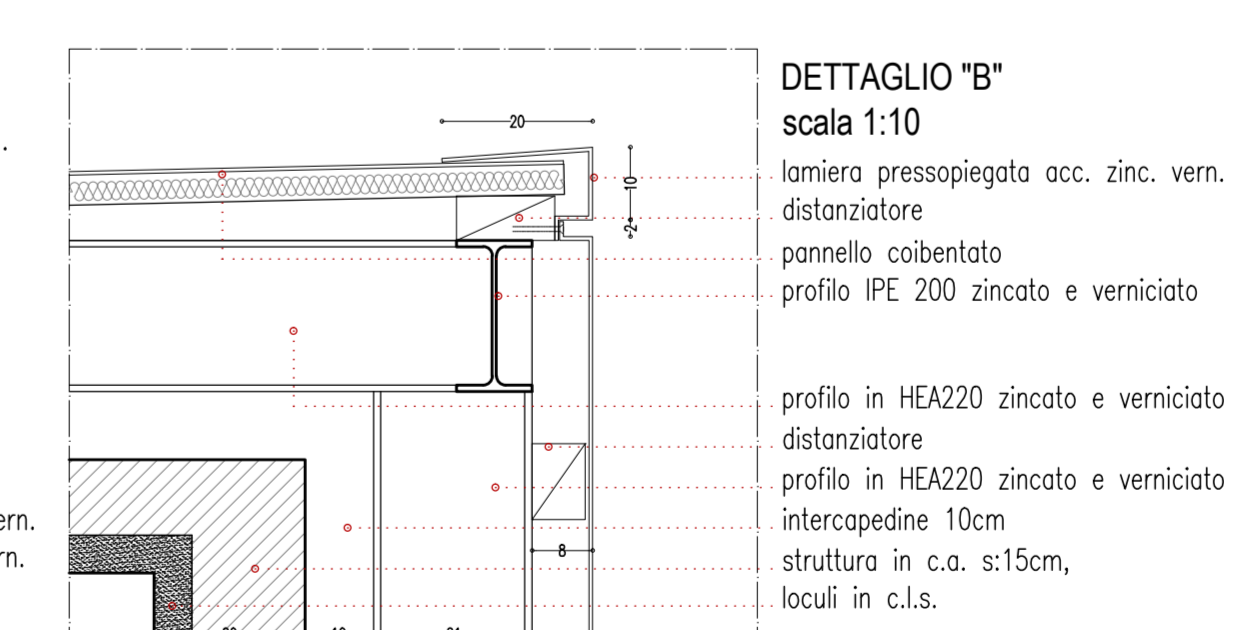
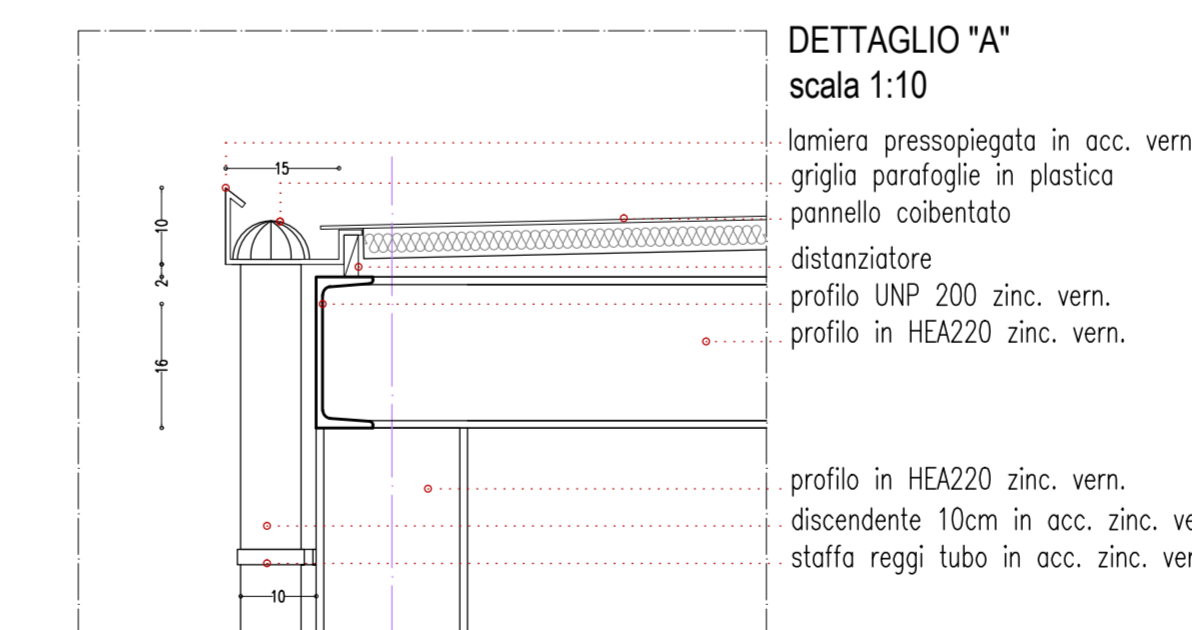
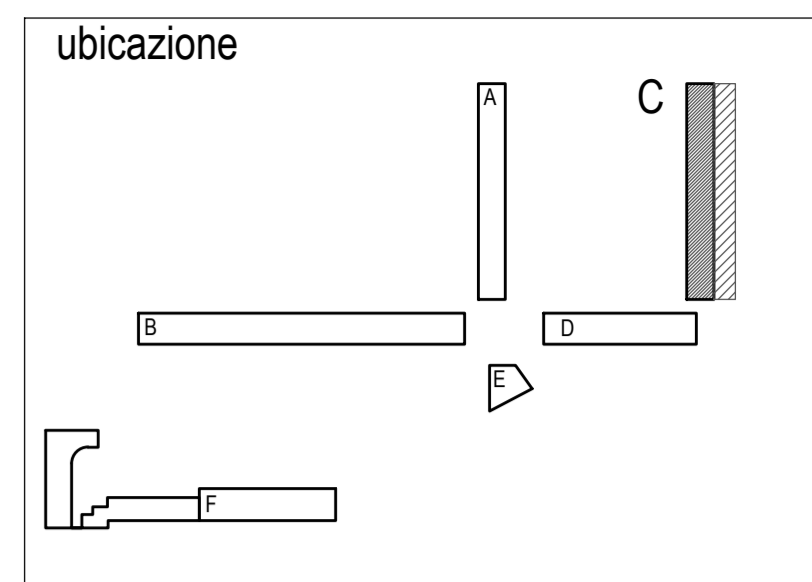
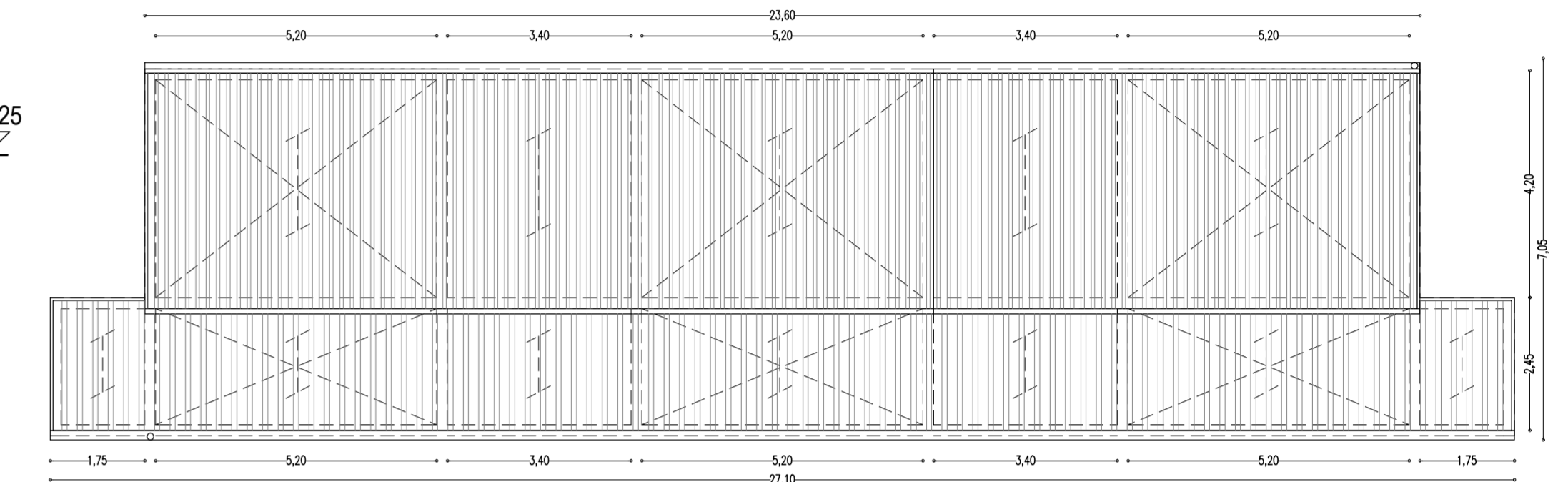
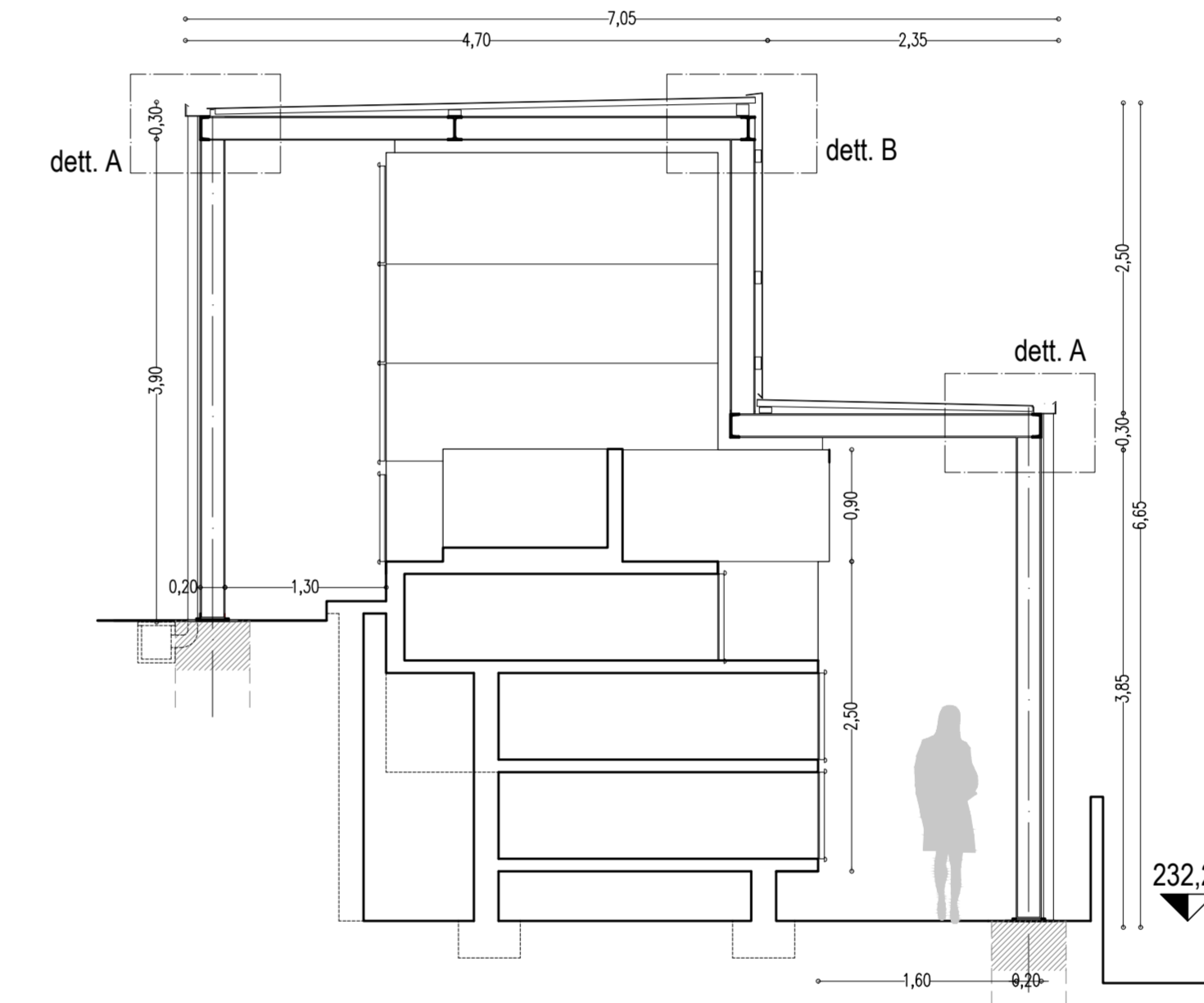


SEZIONE B-B' - scala 1:50



SEZIONE B-B' - scala 1:50



ARCH. VALENTINO CASTELLI - GEOM. GIANLUCA CASTORANI  
Roseto degli Abruzzi (TE) Via Nazionale 147, tel. fax. cell. 085842297 - 3482509936 - 3208348510

**COMUNE DI ROSETO DEGLI ABRUZZI**  
Provincia di Teramo - Il settore "Lavori Pubblici"

progetto: COSTRUZIONE LOCULI CIMITERO DI MONTEPAGANO  
PROGETTO DEFINITIVO - ESECUTIVO

oggetto: LOCULARIO C - PIANTA LIVELLO TIPO, PIANTA COPERTURA,  
PROSPETTO EST, PROSPETTO OVEST, SEZIONI A-A', B-B' DETTAGLI A,B,C.

rip.: 1:100, 1:50, 1:10

progettista: Arch. Valentino Castelli

ir.rup.: Arch. Lorenzo Patacchini

data: .....

Data enter:	Rev.:	App:	Descrizione:	File:	Estens.:	Cod. Pr.:
luglio 2014				montaggioloc.	.dwg	0714